



HW&SW Development

BG930 IoT Gateway Module

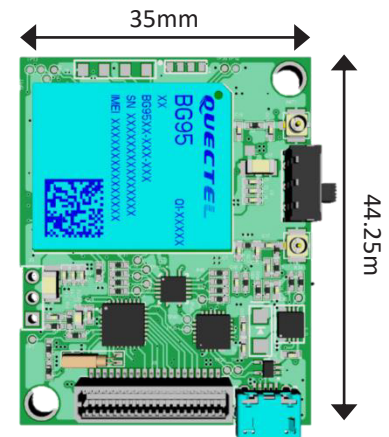
BG930 is a gateway card that allows data transfer between different platforms, e.g. collecting information from the field, and transmitting it thru the Internet and via the cellular network, to a cloud or a local server.

BG930 works in 2G, LTE CAT-M1/NB2, and EGPRS cellular standards, integrated with GNSS positioning.

BG930 is suitable for prototyping of IoT devices and suitable for developers and DIY creators, beginners and experienced alike.

BG930 is suitable for IoT based projects, with network devices, low-power and battery powered, requiring multiple I/O interfaces.

BG930 is suitable for a wide range of applications such as: delivery tracking, e-commerce, agricultural, civil, military uses and more.



Scan for more information

BG930 Features / Advantages :

- » Global link, using cellular network.
- » Global positioning with GPS, Galileo and GLONASS.
- » Very low power consumption - 3.6v@2uA.
- » Battery powered support. Low Battery alarm.
- » Extension connector to GPIO ports and I2C, SPI, UART comms.
- » Software version update using dedicated app (OTA).
- » Saving development time compared to a product based on individual components.
- » Can be easily adapted to a variety of uses.

8TEC established in 2012, offers a comprehensive R&D services from system design, hardware development, software design and complete turnkey services.

our customers



Derech ahatzmaot 43, Yaud P.O.B:336,561010



077-4704241



03-6322566



info@8tec.co.il



www.8tec.co.il



BG930 IoT Gateway Module

Specifications:

Items	Specifications
MCU and Memory	
MCU Core	8051 – 25 MIPS
RAM	4.25 kB
Flash	64 kB
MCU interfaces	UART, SPI, I2C, LED PWM, Motor PWM, I2S, IR, pulse counter, 25 GPIO, capacitive touch sensor, ADC, DAC
Integrated crystal	25 MHz crystal
Power Supply	
Operating voltage/Power supply	3.0 V ~ 5.0 V
Power consumption	Sleep mode: 2uA Idle mode: 5uA Average op.: 50 mA
Environment	
Size	35 x 44mm
Weight	11g
Recommended operating temperature range	-40°C to +85°C
I/O Connections	
Communication Interfaces	2G / LTE CAT-M1 / CAT-NB
GPIO Extension	Up to 40 pins for general use
Applications and uses	
Applications	Cellular communication, Global positioning, Low-power alarm
Uses	Agricultural, Civil and Military uses and more

